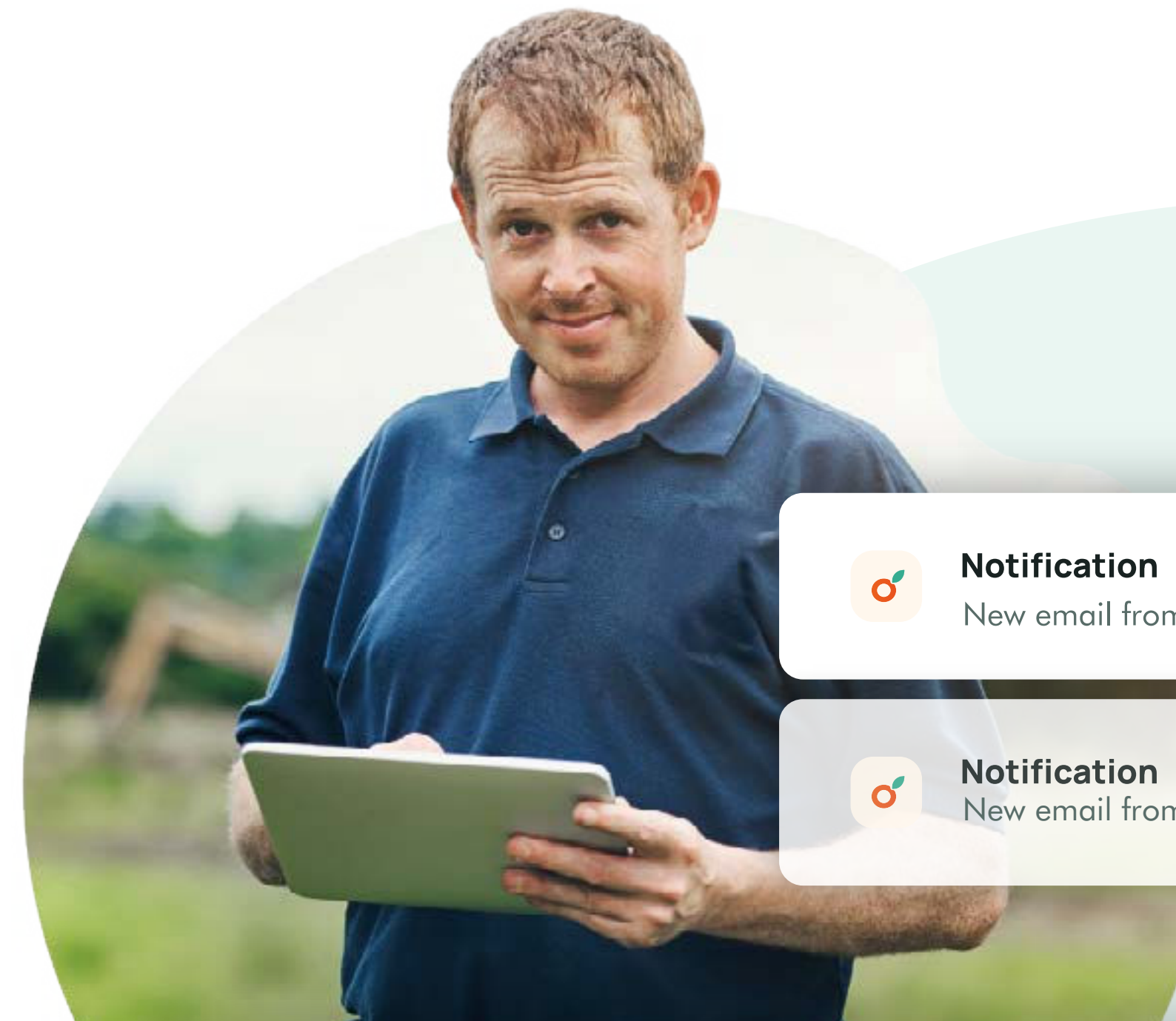


# Simplify your farm monitoring

with

abelio



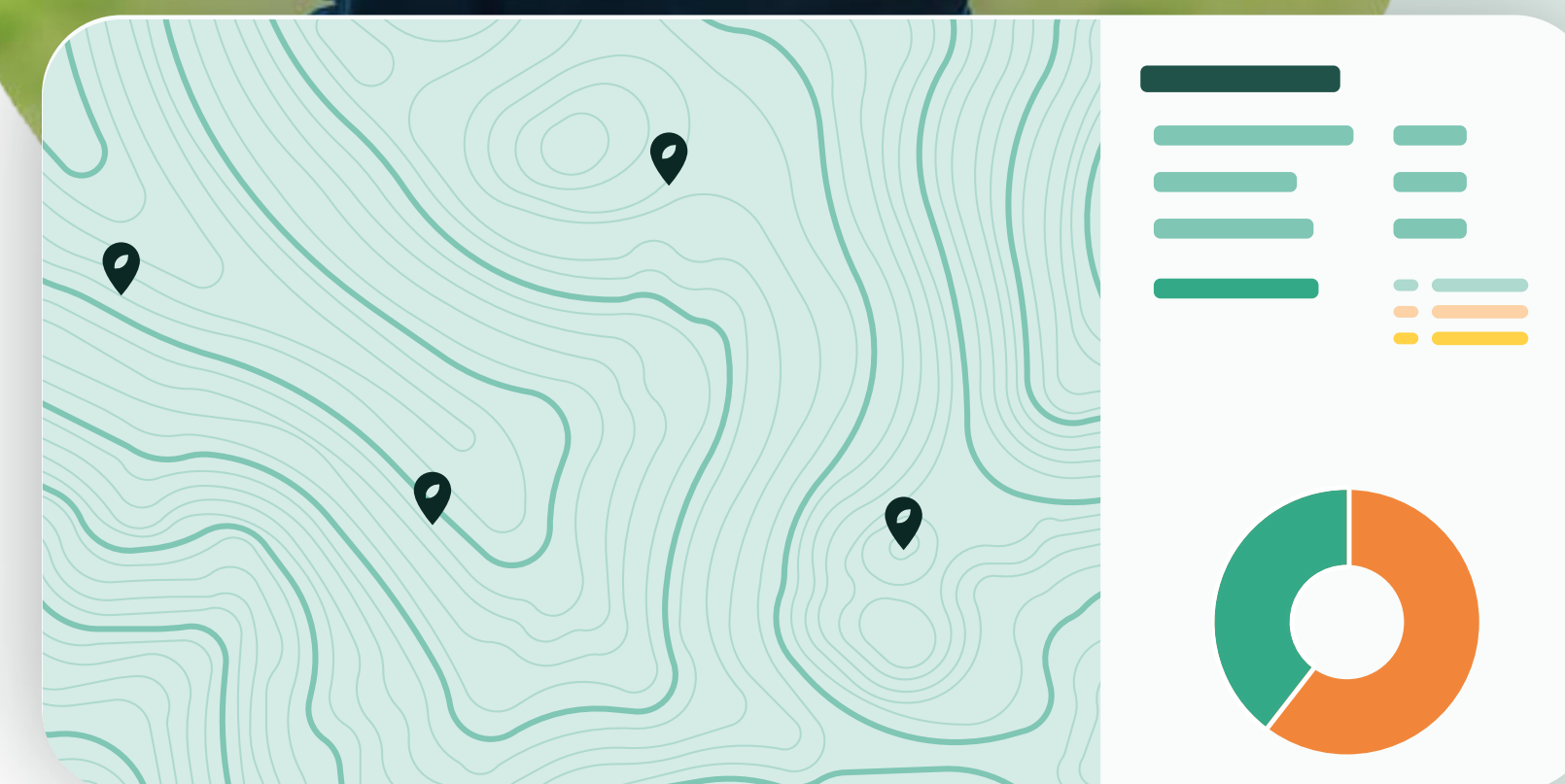
## Notification

New email from Abelio



## Notification

New email from Abelio



# 6 services, 1 solution

A turnkey solution to simplify your daily life!

Find maps, alerts and modulation files on a single platform, connected to farming tools (traceability, weather stations, etc.)

## Nitrogen recommandation

Nitrogen recommendations  
and dose modulation **by**  
satellite



## Weed detection

Detection of thistles, daturas  
and generic weeds **by**  
drone



## Stages and diseases

Stage and disease  
forecasting using  
agro-meteo data



## Soil potential

Estimating variations in soil  
potential using **satellite**  
data



## Cover crop biomass

Biomass forecasting of cover  
crops using **satellite**  
data



## Irrigation

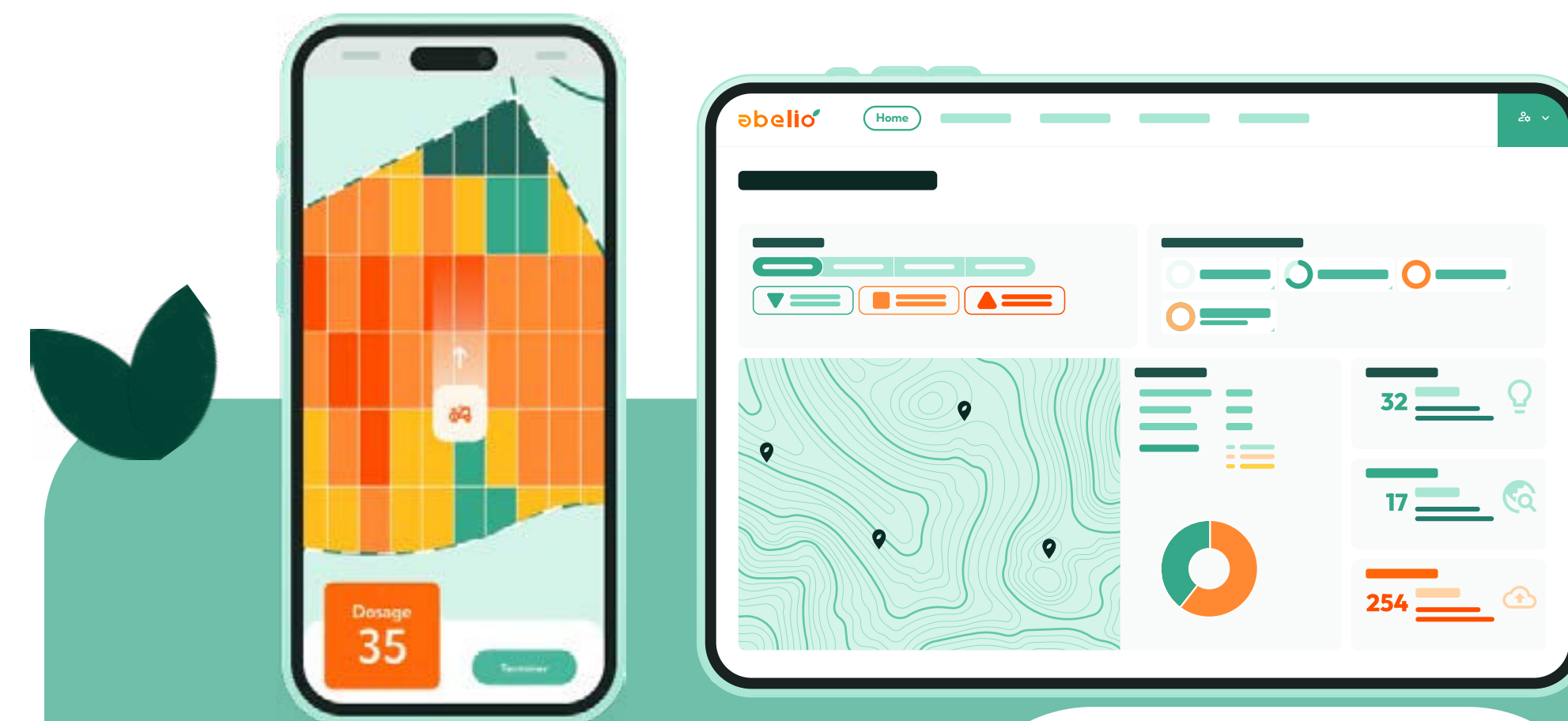
Water management  
using **satellite** and  
agro-meteo data



# Optimize your nitrogen intakes

Improve your performance by providing the right dose, in the right place!

- Generation of reliable agronomic advice available **within 1 hour after adding a plot**, unlimited updatable and at **no additional cost**
- Use of the **latest satellite imagery**, continuously exploitable
- Modulation cards ranging from 2 to 10 zones, adapted to the console for **automatic modulations**. **Manual modulation** available via mobile app



**-5%**  
nitrogen on average  
per hectare  
(Arvalis/Terres Inovia)

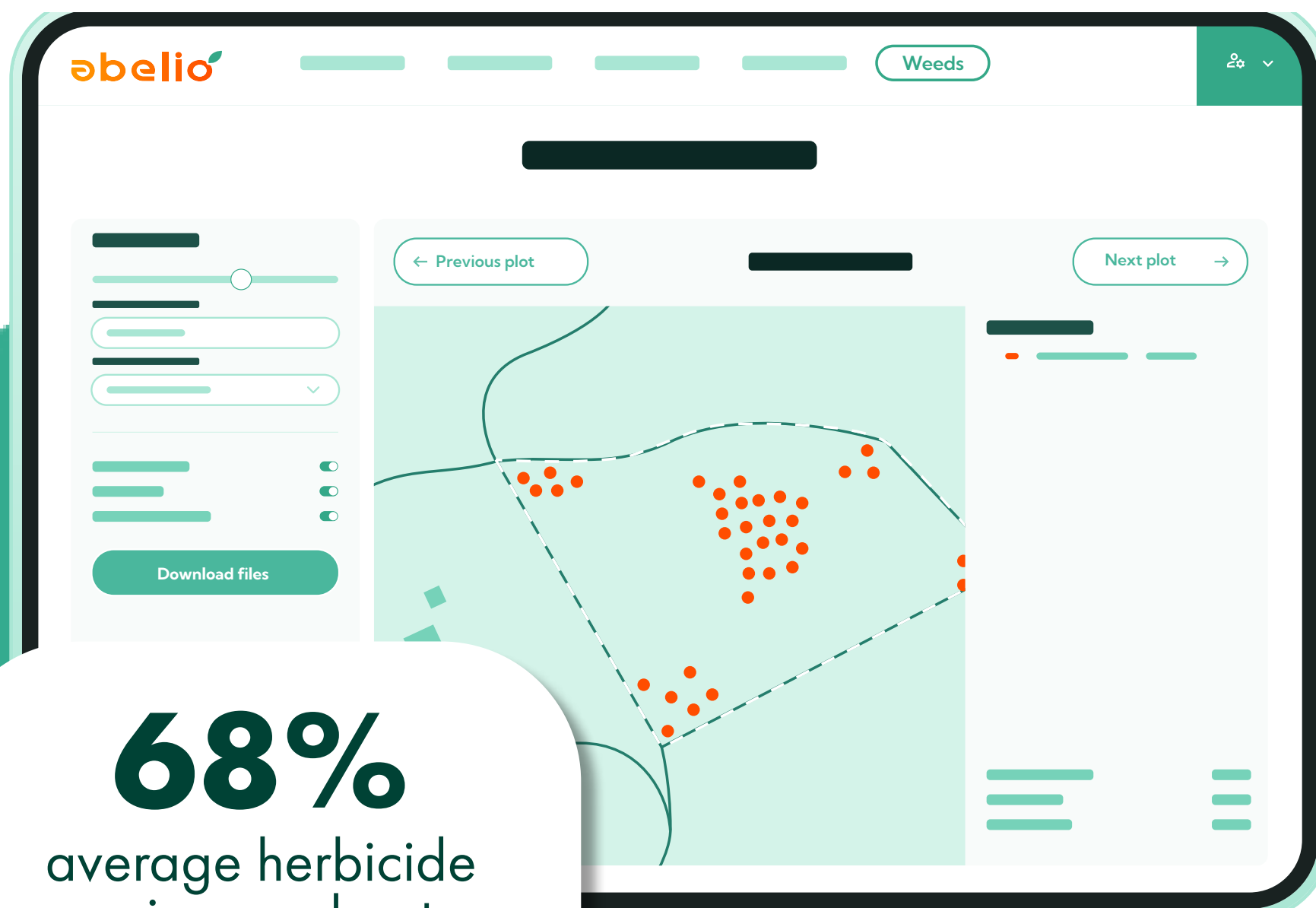
**+0.8%**  
protein gain  
(Arvalis)

**+300kg**  
average yield per  
hectare  
(Arvalis)



# Detect your weeds

Locate and treat while saving on herbicide!



**68%**  
average herbicide  
savings on beets  
(INRAE)

- o Detection of **thistles** on beets, potatoes and flax, detection of **datura** on corn, green beans, soy and blackwheat, generic detection of weeds on corn
- o 1 drone flight for precise detection of weeds (2 possible for datura)
- o **Customizable zone detection and modulation** cards suitable for treatment by section cutoff or nozzle to nozzle

# Evaluate the health of your crops

And optimize your fungicide use by triggering the treatment at the right time!

- o Agro-weather models to warn the farmer:
  - Risk of appearance of diseases on straw cereals, potatoes and vine (mildew, powdery mildew, blackrot)
  - On the evolution of culture
- o Agronomic reliability with the use of **proven models** (Arvalis DeciTrait, Rimpro)
- o Advantages:
  - **Economical:** gain in yield and reduction in the use of fungicides
  - **Ecological and regulatory**



**-21%**  
of fungicide used on  
average  
(Arvalis)

# Pilot your irrigation

Optimize your water resources while avoiding stress on your crops!



**500m<sup>3</sup>**

of water saved per  
hectare per year on  
average



- 🍊 A set of data grouped together to **optimize decision-making**: water balance calculated from soil data, data and characteristics provided, spatial weather forecast, etc.
- 🍊 Satellite data to estimate the consumption of culture more precisely
- 🍊 **Adapted to operational constraints**: duration of a water tour, quotas, waiting days
- 🍊 **Compatible with weather stations** (Weenat, Météus, etc.) and tensiometric sensors

# Evaluate the biomass of your cover crops

## Optimize your intermediate energy crops management!

- Estimation of **biomass** and **intermediate energy crops** using satellite data and field samples
- Complete agronomic analysis** to anticipate **soil needs**, enhance cover crops, and efficiently optimize harvesting operations
- MERCI method**: a simple, field-based tool to estimate the nutrient contribution of cover crops, including nitrogen release, and support fertilization adjustment
- Automated** calculation at plot level
- Simplified** direct sample management via the mobile app



# Estimate the potential of your soil

And maximize the yield from your plots!



**10 years**  
of satellite history

- o **Precise** soil mapping revealing areas of strength and weakness in each plot
- o **Measurement** of various agronomic parameters: topography, growth, organic matter, etc.
- o **Optimization of agricultural practices:** adjustment of sowing density, basic fertilizer and nitrogen inputs according to soil heterogeneities



# Benefits for all

## Use of inputs

### Valorize each unit



Inputs optimization



Regulation conformity and differentiating services

## Crop quality

### Maximize yields, limit losses



Improved yields and crop rejection avoided



Quality crops and compliance with specifications

## Time management

### Save valuable time



Working comfort, optimized time (unique tool)



Simplified logistics and operational monitoring



Farmer's advantage



Distributors

abelio  
FARM MONITORING

# Abelio solution in a few figures

**+160**

distributors of  
Abelio's services

**+20 000**

farmers  
use our tools

**30s**

to set the  
platform

An extensive network of partners



# Contact

Are you interested in our decision support tools or want to know more?  
Contact us!



[contact@abelio.io](mailto:contact@abelio.io)



abelio

FARM MONITORING